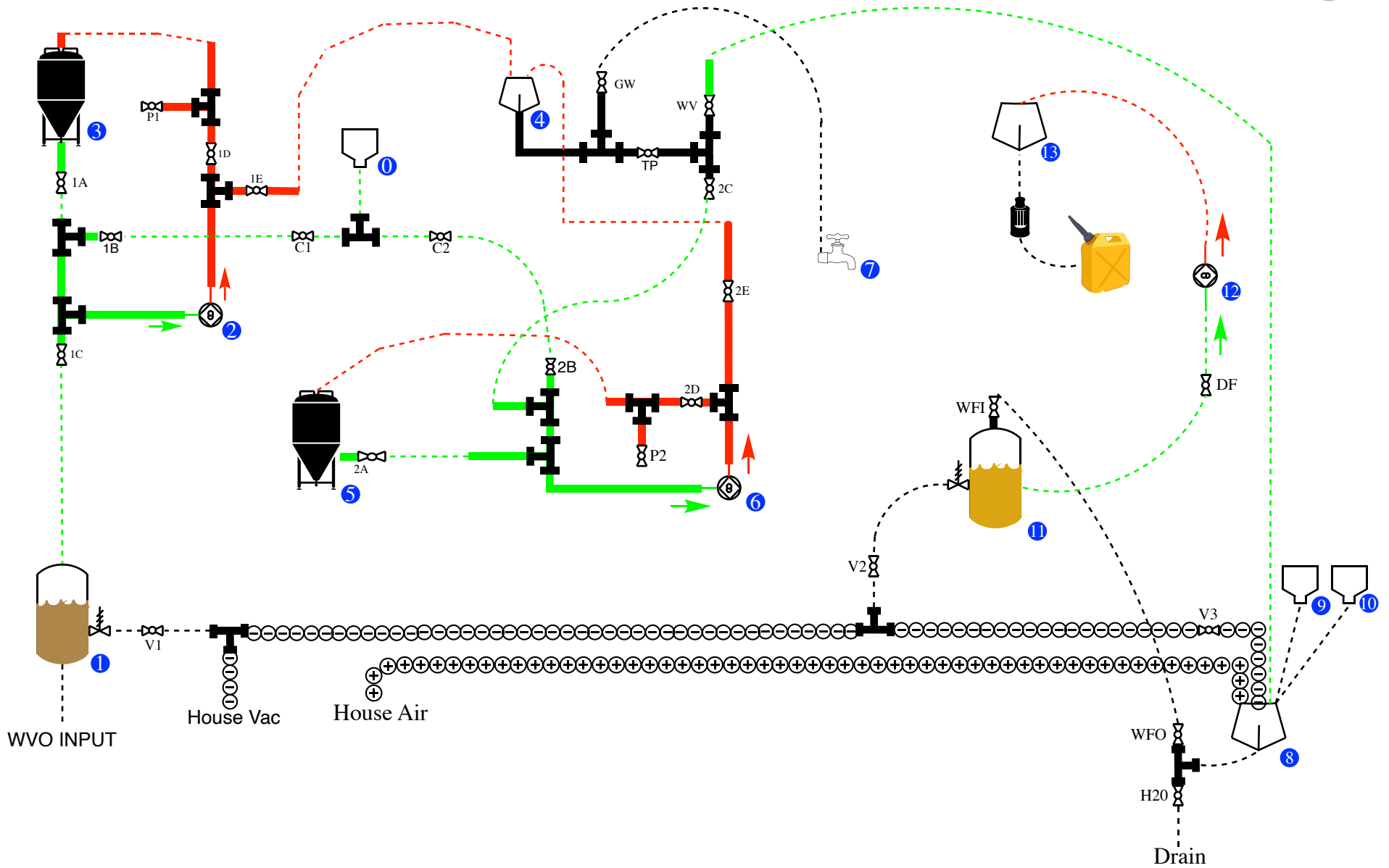


Biodiesel Reactor Schematic

Alkylst •



- 0 Catalyst Tank
- 1 Rendering Tank
- 2 Pump I
- 3 Reactor I
- 4 Separation Tank
- 5 Reactor II
- 6 Pump II
- 7 Waste Glycerol Output
- 8 Wash Tank
- 9 Acetic Acid Wash Input
- 10 Water Wash Input
- 11 Fuel Drying Tank
- 12 Pump III
- 13 Unfiltered Biodiesel Tank

